



Working with high-pressure waterjet equipment is dangerous and could lead to severe injuries or even death.

Use this QUICK START GUIDE only in addition and after reading and understanding the guidelines described in the Best Practices for the Use of High Pressure Waterjetting Equipment published by the Waterjet Technology Association (www.wjta.org) and the complete C70 Video Nozzle User Manual (available from the C70 Video Nozzle Operating Software).

C70 VIDEO NOZZLE QUICK START GUIDE



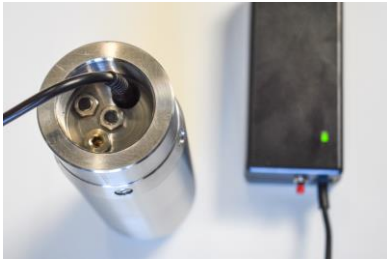
1. CHARGE

Unbox the C70, remove the "charging" cap and insert the charger plug to charge the batteries.



Press the (red) "booster" button on the charger for a few seconds if the charger's LED does not immediately indicate charging (red).

Use the supplied Micro USB cable to charge the Tablet.



The batteries are fully charged when the charger's LED indicates green.

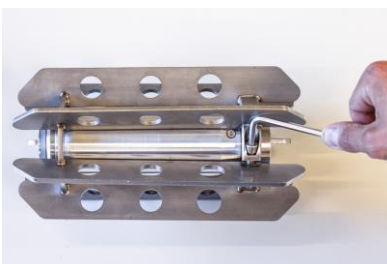
Check the O-ring seal and fasten the "charging" cap at 4NM.



2. PRESSURIZE

Remove the "pressurizing" cap, insert the hose-end of the "pressurizing" pump and manually pump a few times, until air escapes from the overpressure port on top of the pump.

Check the o-ring seal and fasten the "pressurizing" cap at 4NM.



3. MOUNT SKID

Insert the C70 into the corresponding skid and securely fasten the skid.





DANGER

Working with high-pressure waterjet equipment is dangerous and could lead to severe injuries or even death.



4. ACTIVATE C70 & TABLET

Attach the nozzle ring and fasten with the supplied wrench to activate the C70 Video Nozzle.



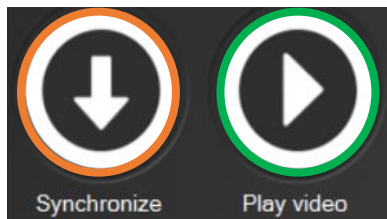
Start the tablet and launch the C70 Video Nozzle software.

Verify that the C70 video nozzle is "Connected" and the "Camera active".



5. START CLEANING

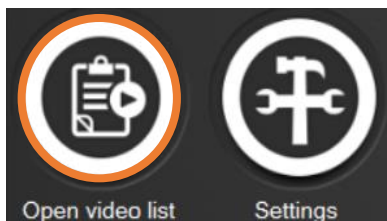
A video recording will start when the water pressure is on and end when the pressure is off for more than 30 seconds. The tablet will register the GPS locations.



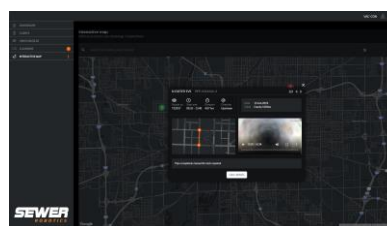
6. SYNCHRONIZE & WATCH VIDEOS

Click "Synchronize" when the C70 Video Nozzle and tablet are connected to download all new cleaning videos.

Click "play video" to open the video folder and double-click a video to watch it.



(To download a single video, click "Open video list", click "Camera" and enter the date when the video is recorded. Select the video from the list and click "download" to download the selected video.)



7. UPLOAD VIDEOS TO SEWER ANALYTICS

Connect the tablet with the internet to automatically upload the cleaning videos and GPS locations to Sewer Analytics.

Log in to Sewer Analytics to access, watch, edit and share your cleaning data.

Please contact your Sewer Robotics distributor, or Sewer Robotics' service department via Whatsapp at the number +31 174 257 141 or via email address service@sewerrobotics.com if anything is unclear after reading the quick start-up guide and the user manual.